



# Evena Owl<sup>®</sup>2.0

Evena's patented Multispectral™ imaging technology is now available in a small, portable and cost-effective solution – the Evena Owl<sup>®</sup>2.0. With imaging vastly superior to anything else on the market today, Evena Owl<sup>®</sup>2.0 offers hospitals, physician offices and clinics a new vision for fast, accurate and precise vascular access. And with optional DeepVu™ ultrasound capability, the Evena Owl<sup>®</sup>2.0 is the only portable dual-modality vascular imaging system available today.

## Unique Evena Owl<sup>®</sup>2.0 features include:

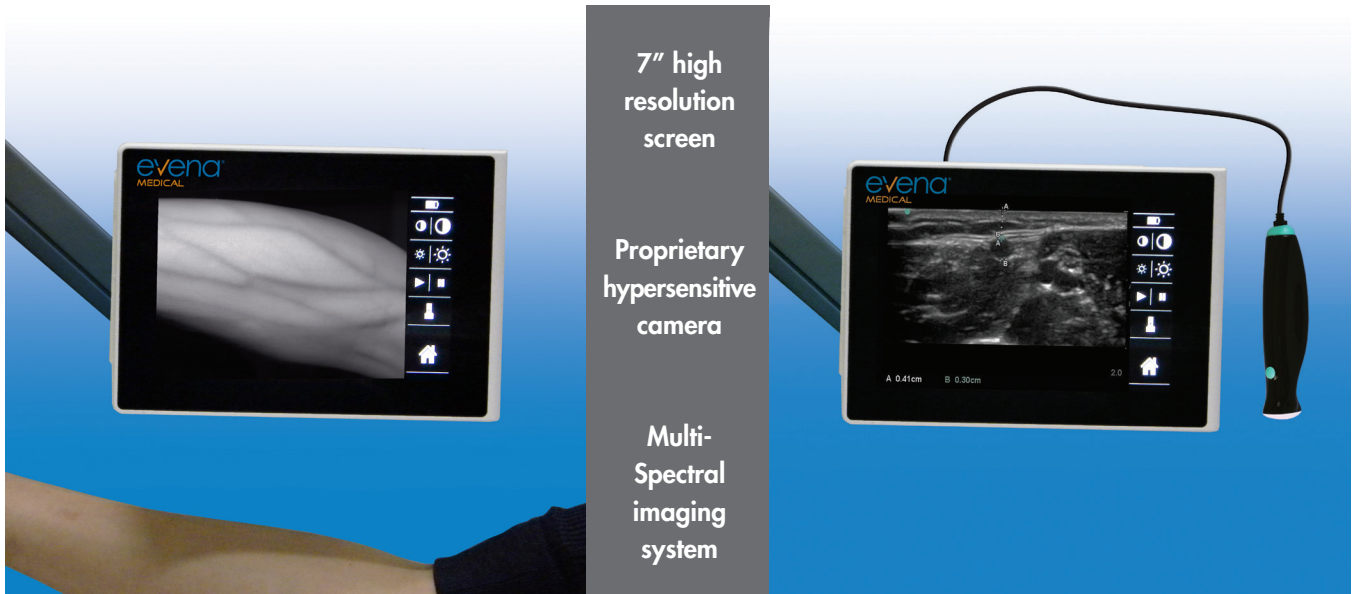
Feature	Advantage
Multispectral Imaging	Patented by Evena, this imaging technology provides the deepest penetration with the most detailed and sharpest image. Effective for almost all physiologies, including difficult to image dark-skinned or obese patients.
Real-time anatomically accurate images	No other system provides such exceptionally clear, accurate images.
Hands-free	Small, lightweight unit can be mounted on an IV pole for portability and easy maneuverability, even in tight spaces.
7" screen displays high definition images	High resolution screen technology displays the highest quality images available today, enabling clear visualization of even the smallest veins.
Optional ultrasound enables dual mode imaging	DeepVu™ ultrasound via USB-connected transducer for imaging deeper veins, if needed.

Technical Specifications	
Imaging technology	Custom digital Hi-def camera for patented Multispectral imaging for most patients, including visualization of extravasation/infiltration.
Screen	High resolution 7" touchscreen, with intensity (brightness)/contrast adjustment.
Overall size	5.5"H x 8"W x 2.5"D
Power	Battery, or A/C
Weight	3.75 lb.
Upgradable	Can be upgraded to provide connectivity via Bluetooth, Wi-Fi, 3G wireless and USB, with an option for Ultrasound (U/S).

*Not Available In All Countries.*

Evena Owl®

# The Future of IV Placement is Here Today



## Optional Arm for IV Pole Mounting

The small, portable Evena Owl®2.0 brings state of the art Evena® Multispectral™ imaging technology to care sites as diverse as clinics, doctors' offices, emergency rooms and ambulatory care centers – anywhere size and flexibility are important.

## Optional DeepVu Ultrasound

The Dual Modality Evena Owl®2.0 when equipped with its DeepVu ultrasound offers the medical practitioner the only complete vascular access platform that combines the current recommendations of the Infusion Nurses Society – “the use of light and/or sound technology for peripheral IV access”.

**evena**<sup>®</sup>  
MEDICAL

Silicon Valley  
650.209.0398  
339 S. San Antonio Rd., #1C  
Los Altos, CA 94022

Sacramento Central Valley  
916.783.8473  
1001 Enterprise Way, #100  
Roseville, CA 95678

[www.EvenaMed.com](http://www.EvenaMed.com) | [sales@evenamed.com](mailto:sales@evenamed.com)



© Evena Medical, Inc. 2015. All rights reserved. 11/15